



匠心专注环保地板 打造秦力百年品牌

始于1969

TSINLY

橡胶地板

秦力(深圳)科技有限公司  
TSINLY TECHNOLOGIES CO., LTD

[www.tsinly.com](http://www.tsinly.com)

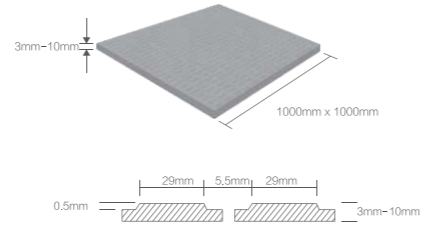
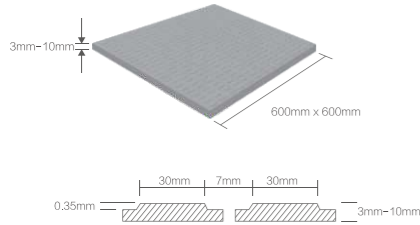


# 山海 - 浮点 SHANHAI

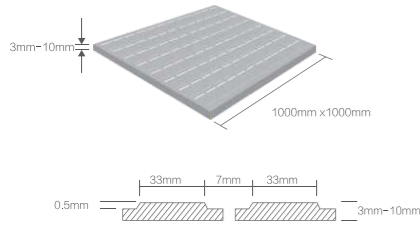
Rubber tiles with three types of molded pattern surface for extremely heavy traffic areas.

块材，可选三种浮雕表面Optional with 3 types of molded surface

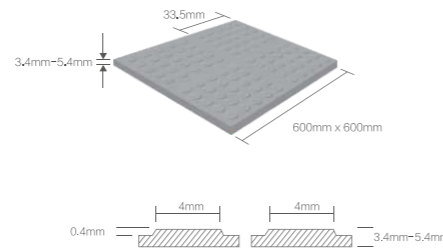
## 圆浮点 Round



## 方浮点 Square



## 迷你小浮点 Mini



### 产品特性

超强耐磨：极长使用寿命，适用于人流量密集区域。

健康环保：精选原材料，低VOC挥发，营造健康室内空气。不含PVC和邻苯类增塑剂，不含卤素。

防火阻燃：符合HG/T 3747.1和欧盟EN 13501相关标准，B1级防火，低烟密度，低烟毒性。

安全防滑：符合抗干/湿滑性的安全需求，让行走更安全。

强韧弹性：脚感舒适，从而缓解人体长时间行走及站立的疲劳感。

耐压抗冲：有效对抗重压负荷，缓解冲击。

减震静音：减少行走噪音，降低噪音影响。

轮压适用：可承载叉车负荷，耐椅轮反复碾压。

无缝拼接：无需焊线，铺装效果美观自然。

抑菌防霉：有效抑制细菌、霉菌滋生。

耐灼伤：抗香烟灼烧3级或以上。

### Characters

Excellent wear resistance: Ultra long life. Good for heavy usage.

Green and healthy: Low VOC emission. Free of PVC, phthalate plasticizers and halogens

Fire behavior: Conform to EN 13501 and HG/T 3747.1 standard, with fire behavior class B1.

Good anti-slipping performance. Antiskid dry/wet for safe walking.

Good elasticity: Comfortable footfall feeling.

Resistant to high static load. Less residual indentation compared to other kind of resilient floor.

Shock absorption and less noise: Reduce the step noise and impact sound.

Wheelchair and forklift truck suitable.

Jointless installation

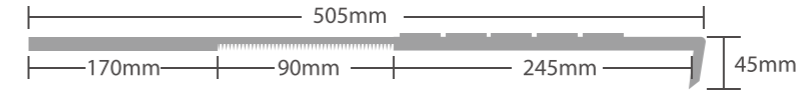
Anti-bacterial

Resistance to cigarette burn.

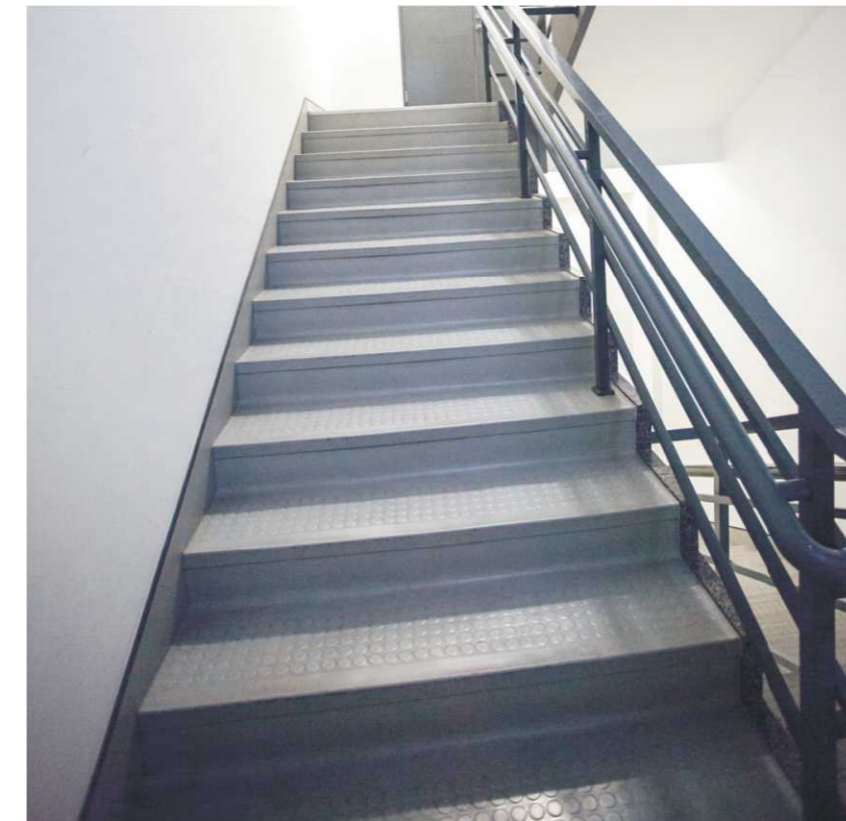
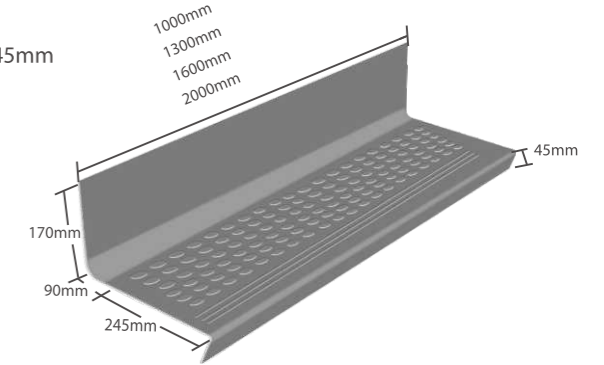
## 浮点楼梯踏步 Stair treads

Pre-fabricated stairtreads with nosing, riser and tread all in one piece.

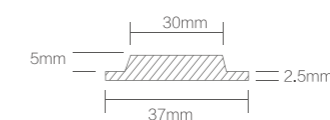
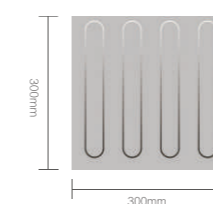
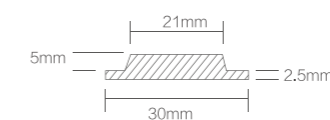
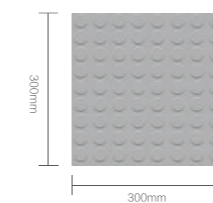
特点：铺装快捷简单、易清理、防滑、减噪、美观、专业，堪称典范的楼梯整体铺装方案，适用于新建和改造项目。



楼梯踏步尺寸：  
1000mm x 505mm x 5.0mm  
1300mm x 505mm x 5.0mm  
1600mm x 505mm x 4.5mm  
2000mm x 505mm x 4.5mm



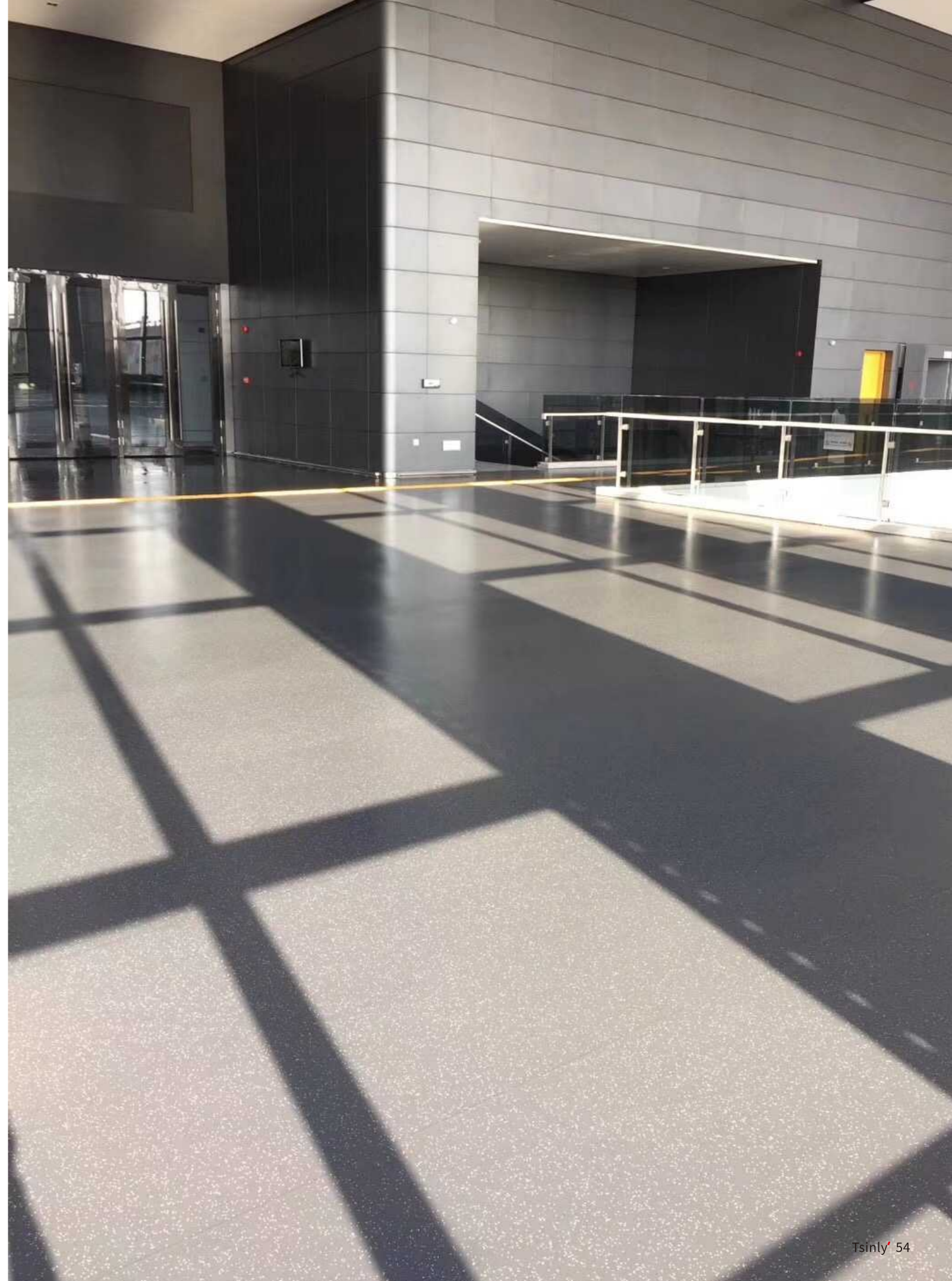
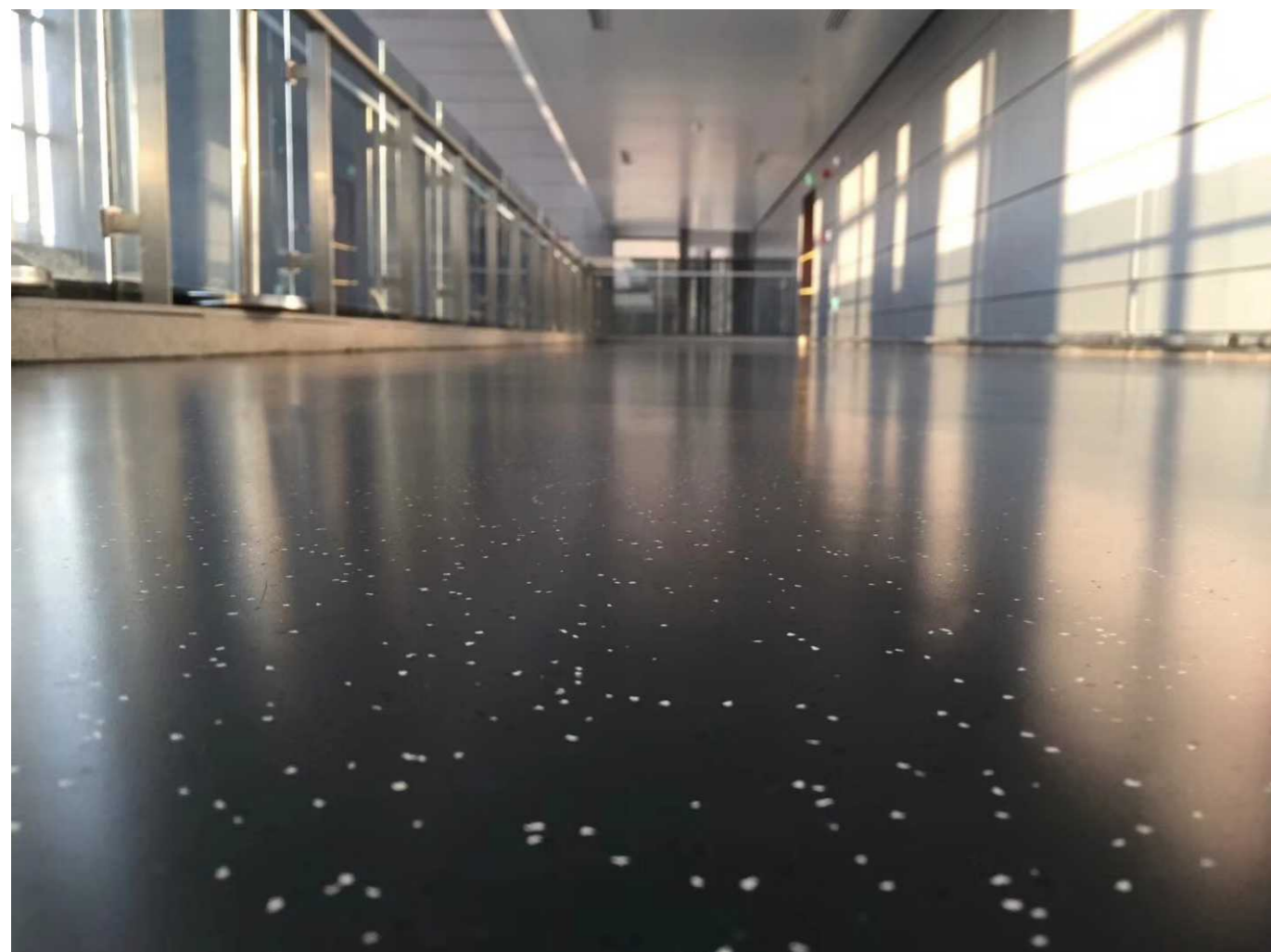
## 盲道 Blind Track Tiles



株洲醴陵陶瓷馆

ZHUZHOU LILING CERAMICS MUSEUM

年份：2018年 面积：9,000m<sup>2</sup>



## 块材技术参数

检测项目	测试标准	指标要求	结果	
项目	Test Method / 测试方法	Requirement / 指标要求	Shanghai - Relief surface 山海-浮点系列	Juyong - Hammered Surface 居庸-锤击纹系列
Thickness / 厚度	ISO 24346		3.5mm	3.0mm
Size / 尺寸	ISO 24342		600mm x 600mm 1000mm x 1000mm	600mm x 600mm 1000mm x 1000mm
Classification / 分级	EN ISO 10874		23 / 34 / 43	23 / 34 / 43
Fire Behavior 燃烧性能	EN 13 501-1		Bf1-s1	Bf1-s1
	GB 8624		B1	B1
Toxicity of fire gases 烟气毒性	GB / T 20825		ZA1	ZA1
Anti-slip properties 防滑等级	DIN 51130		R9	
	DIN 51097		A ; B	A ; B
Dimensional Stability After Exposure to Heat 加热后尺寸稳定性	EN ISO 23999:2012 EN 434 HG / T 3747.1	± 0.4%	± 0.15%	± 0.15%
Flexibility 抗弯曲性能	EN ISO 24344 HG/T 3747.1	No Cracking <3.0mm Mandrel diameter 20mm ≥3.0mm Mandrel diameter 40mm 轴直径20mm挠曲无裂纹	No Cracking 无裂纹	No Cracking 无裂纹
Hardness 硬度	ISO 7619 GB/T 531.1 HG/T 3747.1	≥75 shore A	≥85 Shore A	≥85 Shore A
Residual Indentation 残余凹陷	EN ISO 24343 EN 433 HG/T 3747.1	Mean value ≤0.20mm at thickness <3.0mm Mean value ≤0.25mm at thickness ≥3.0mm 厚度<3.0mm的, 平均残余凹陷≤ 0.20mm 厚度≥3.0mm的, 平均残余凹陷≤ 0.25mm	≤0.15mm	≤0.15mm
Colour Fastness to Light 耐光染色牢度	ISO 105-B02:2014 Method 3 GB/T 8427	≥level 3	≥level 3	≥level 3
Heat Stability Test 受热色牢度	ASTM F1514-03 (R2013)	ΔE≤8	ΔE≤8	ΔE≤8
Tear Strength 撕裂强度	ISO 34-1:2015 Method B Procedure(a) GB/T 529	Mean Value ≥20KN/m 平均值 ≥20KN/m	>20KN/m	>20KN/m
Castor Chair Test 椅脚轮测试	EN 425: 2002		Suitable通过	Suitable通过
Resistance to Stubbed and Burning Cigarettes 耐香烟灼烧	EN 1399 HG/T 3747.1		Grade 3 3级	Grade 3 3级
Abrasion resistance 耐磨性能	ISO 4649 GB/T 9867	5N load ≤250mm <sup>3</sup>	≤200mm <sup>3</sup>	≤200mm <sup>3</sup>
Chemical resistance 耐污性能	HG/T 3747.1 EN 423		Resistant depending on concentration and time of exposure取决于化学品浓度和暴露时间	
Impact Sound Insulation 撞击声改善量	ISO 140-8		8 dB	8 dB
Migration of Certain Element 可溶性重金属含量	EN71 Part3: 1994	ND	ND	ND
Electric resistance 体积电阻	IEC 62631-3-1:2016		>1.0 × 10 <sup>10</sup> Ω	>1.0 × 10 <sup>10</sup> Ω

\* Specifications listed above are based on averages from manufacturing and may vary within normal industry tolerances.

\*以上参数是基于产品制造过程中的平均水平, 不同批次产品之间可能有些差别, 但是这些差异会在行业允许的合格范围内。

\*Manufacturing process or material supply may change without notice. But those changes don't affect the product performance.

\*制造工艺或者原材料供应有可能变化, 而且不会通知, 但是这些变化不会影响产品的性能。

\*The sample swatches in this sample card are intended for reference of color and design, which don't involve warranty of any qualities or application options. In the case of unusual conditions of use and stresses(extreme light incidence, UV irradiation, exposure to chemical substances or other aggressive agents) please consult us. Please ask for samples if you want to conduct any test on your own.

\*本样本卡中的样块仅用于颜色和设计参考, 不涉及任何质量保证或应用选项。如果需要在异常条件下使用(如极端光照、紫外线照射、暴露于化学物质或其他侵蚀性物质), 请咨询我们。如果你想自己做任何测试, 请索取样品。

## 社会责任

责任至上, 基业长青, “秦力”橡胶地板秉承低碳, 节能的环保理念, 贯彻可持续发展战略, 在产品生产中采用环保材料, 致力建设生态家园, 为推动中国节能全面履行社会责任。

## 环保理念

“秦力”橡胶地板本着珍惜自然资源, 创享绿色空间的原则, 所选材料由天然橡胶、合成橡胶和其它成分的高分子材料构成。

## 可持续性

“秦力”橡胶地板结合科学管理, 提高企业和设备生产效率, 减少能源消耗, 并通过改善产品性能, 提升产品的品质, 为客户提供完善的产品售后服务。




本画册文字及图片适用于彩色橡胶产品宣传, 最终解释权归秦力所有。